



12 Bennett Road  
, Bristol, BS5 8EY

Asking price **£360,000**

# 12 Bennett Road



## Description

Beautifully presented Victorian terrace located in a cul-de-sac just off Beaconsfield Rd in St George. Well positioned to enjoy all that Church Rd has to offer, you are just a short walk away from St George's Park and the local independent shops cafes and bars of Redfield.

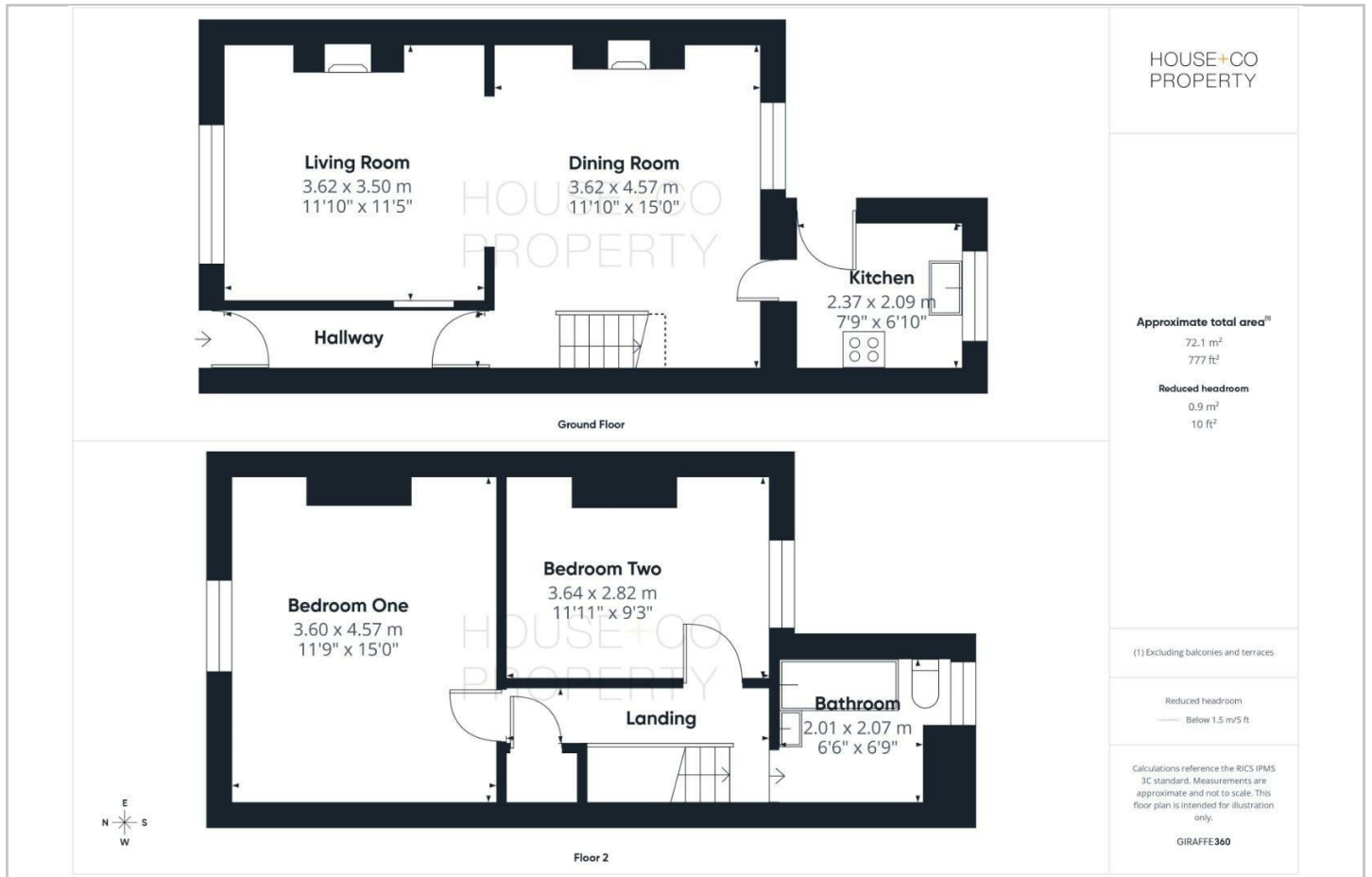
Comprising of entrance hallway, a lovely light-filled lounge, dining area with exposed chimney breast and modern kitchen to the rear. Upstairs you'll find a modern bathroom suite and two double bedrooms with stripped and painted floors, giving a stylish feel to the home. Outside to the rear is a lovely sunny south-facing garden with mature plants, shrubs and lawn and a private patio seating area to enjoy the sun having your morning coffee! In excellent condition throughout, this is a perfect home in a great location. Please call to view!

- VICTORIAN TERRACE
- TWO DOUBLE BEDROOMS
- MODERN KITCHEN
- CLOSE TO ST GEORGE'S PARK
- CUL-DE-SAC LOCATION
- OPEN PLAN LOUNGE/DINING
- UPSTAIRS BATHROOM
- SOUTH FACING GARDEN

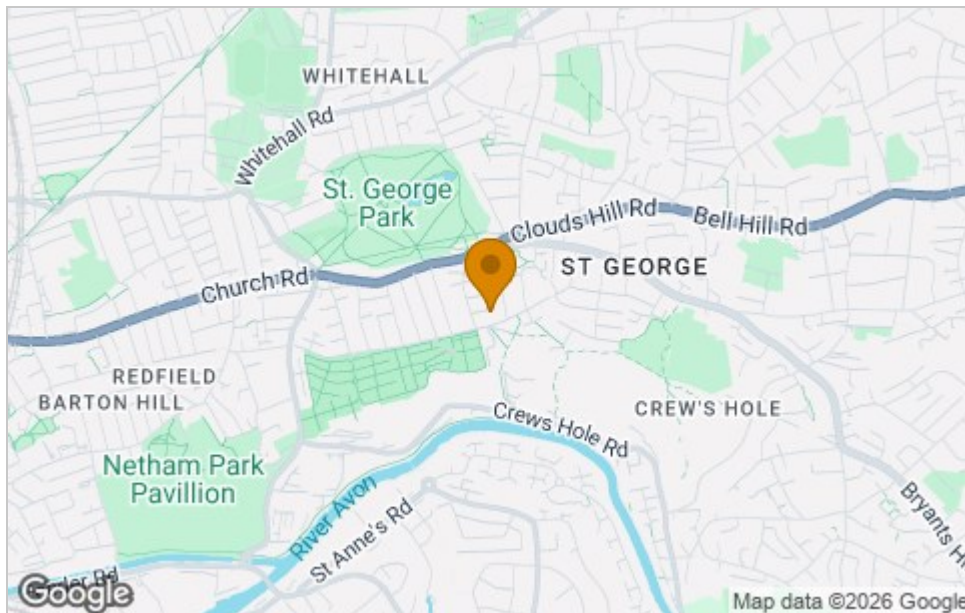




## Floor Plan



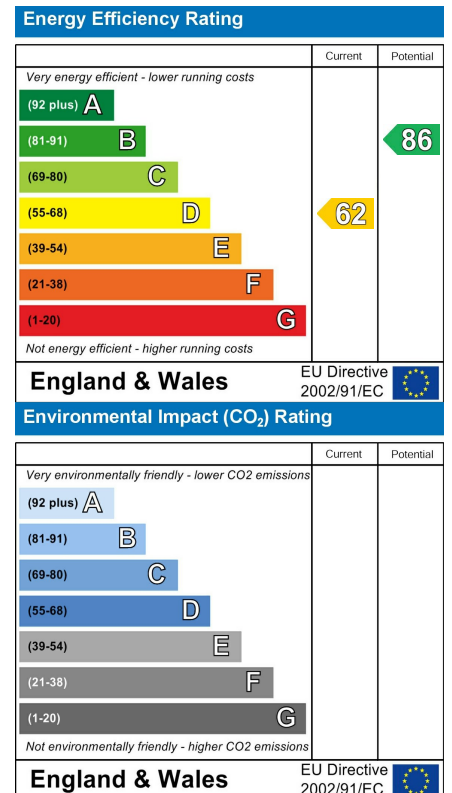
## Area Map



## Viewing

Please contact our House + Co Property (Sales) Office on 0117 907 0020 if you wish to arrange a viewing appointment for this property or require further information.

## Energy Efficiency Graph



These particulars, whilst believed to be accurate are set out as a general outline only for guidance and do not constitute any part of an offer or contract. Intending purchasers should not rely on them as statements of representation of fact, but must satisfy themselves by inspection or otherwise as to their accuracy. No person in this firm's employment has the authority to make or give any representation or warranty in respect of the property.